



## What a March!

What a month March is!

Not only are we a quarter of the way through 2024 we have a host of fun things to be looking forward to.

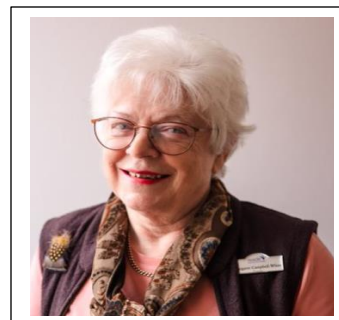
We've got Mother's Day on 10<sup>th</sup> March, an Easter holiday that starts on 29<sup>th</sup> March but before then on the 22<sup>nd</sup> of March the Wade trustees want to thank all our staff, members, and their families at our special thank you afternoon. Please find attached your invite to this special event. Cream tea and cakes for you all!

Look out for your invite and put it in your diary.



## Trustee News:

From Margaret  
Campbell-White



So, I thought I'd update you all this month on the state of the Wade building work since it's been a few months since David Lee gave an update.

The good news is that we are finally in a decent state with our downstairs lounges which are looking so much better. The walls have been redecorated and the built in cupboards are almost completed. We will soon have two very nice lounges ready for our members to have a pleasant and relaxing time.

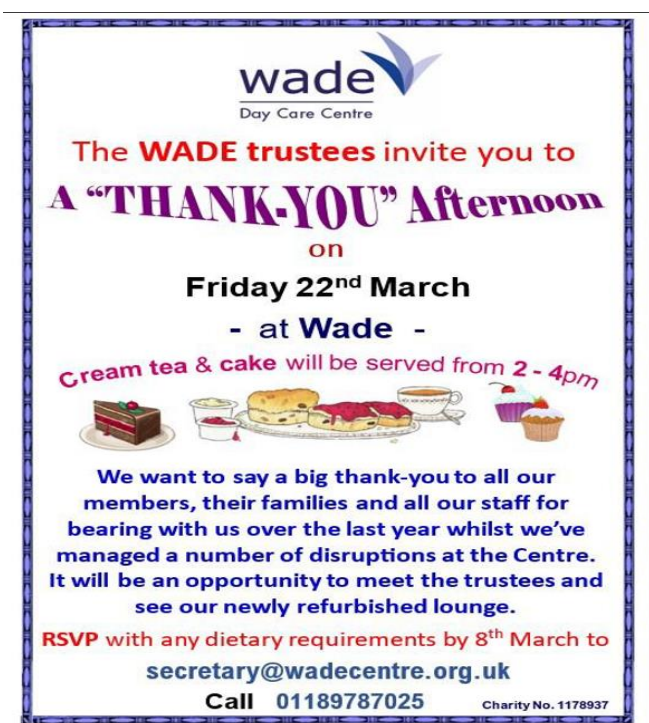
I am also delighted to say that we have a new TV in the further lounge which has a great sound system so we should be having some great movies showing in that room too!

We are still working on fixing our lift so that we can get members up to the rooms upstairs and especially to the new hairdressing room which is one of the next rooms we are looking to kit out and redecorate.

We also have a new temporary office that has been built next to the original office to provide Emma and her team with a better working space.

There are still some external building activities to complete but things are progressing well with more updates to come.

On Friday 19<sup>th</sup> April we will be officially opening the new lounges at Wade. Next month Louise Wingfield will be telling us more about the event which is intended to help us generate some more members to Wade now we have more space.





These ladies are so professional, they care so much about Wade and the members and they have really helped me settle in. Not to mention they are such a fun bunch!

Emma Hamilton- NEW Wade Centre Manager.

## Congratulations Julia -60?



Everyone celebrated Julia's birthday last month and let's hope someone else cooked her birthday lunch since she cooks such great meals for us at Wade!

## A Fond Farewell to Freda Penn

A few of the staff from Wade attended Freda's funeral and wake last month along with all her other friends and family. It was a lovely ceremony and thank you Brian who has kindly given us the wake collection. We'd like Brian to choose something we can buy with the money so she can be remembered at Wade.

"Freda was a joy to be around and is going to be greatly missed by all the staff here at Wade. Freda had the funniest stories, loved the dinners and the singing" – Jackie Nicholson said.

## Our Great Wade Team introductions continue...

In this month's newsletter Emma introduces us to some more of her team. Bet you can't wait to see who we'll introduce next month! Once we've introduced you to everyone, we'll be adding all the photos to a photo board in the centre that you can view them all!

### Introducing Our Famous Five - Care Team



Jackie Nicolson



Rachel Heskins



Emily Dance



Babs Rutter



Davinia Horton



Our singing carers!





## Upcoming Events for Your Diary

- **Friday 22<sup>nd</sup> March – Members, Staff & Families Thank You Afternoon (2.00-4.00)**
  - Invites sent with this newsletter. Please speak to Elaine in the office if you did not get one!
- **Friday 19<sup>th</sup> April – New Member's Open Day (12-3pm)**
  - More details to come next month on an event we are planning to highlight the Wade Centre to new members.
- **Thursday 25<sup>th</sup> April - Fashion Show**
  - An exciting evening of fashion and fun and you'll see some of the Friends of Wade and Trustees doing the modelling!

**Ticket Price**  
**£ 10**  
Must be bought in advance

# FASHION SHOW

An exciting evening of fashion & fun hosted by Travelling Trends

A ladies night out with a difference!  
As well as a live CATWALK SHOW, there is ample time to try on & buy this season's High Street & Branded fashions.  
All at bargain prices!!

**Thu. 25<sup>th</sup> April 2024**  
**7pm for 7.30pm**  
**Wade Day Centre**  
**40 Reading Road**  
**Wokingham RG41 1EH**

You can book your seat by email to [secretary@wadecentre.org.uk](mailto:secretary@wadecentre.org.uk) or call WADE (weekdays 10am-4pm) on 0118 978 7025

**Includes a glass of Wine/Juice & Nibbles**

We Accept All Major Credit Cards

**Travelling Trends**  
Fundraising Fashion Shows

[www.travellingtrends.com](http://www.travellingtrends.com)

WADE WILL CLOSE ON THURSDAY 28<sup>TH</sup> March at 4:00pm  
AND RE-OPEN ON TUESDAY 2<sup>ND</sup> APRIL AT 9:00am.

WE WISH ALL OUR MEMBERS AND THEIR FAMILIES A  
VERY HAPPY AND PEACEFUL EASTER.



- **Monday 6<sup>th</sup> May – Wade at the Wokingham May Fair**
- **Friday June 7<sup>th</sup> – 3<sup>rd</sup> Annual Wade Golf Day with Homestart at Hennerton Golf Course in Wargrave**
  - Lots of hole in one prizes and a special prize for the 11<sup>th</sup> hole of £10,000!
  - Celebrity auction with lots of golf prizes
- **Saturday 22<sup>nd</sup> June – Our Summer Fair**
- **Saturday 23<sup>rd</sup> November – Our Christmas Fair**

## Friends And Supporters of Wade

We've had a super generous month of support for Wade. We continue to have some great support from the local schools who do such a good job helping Wendy in the shop and helping at the day centre.

We got a very generous donation from The Dinton Walking Group this month. You can see in the picture below our trustee Louise Wingfield accepting a cheque from the outgoing chair of the group – Joyce Dunning for £1,103.03! A massive thank you Dinton Walking group.

If you or your families belong to groups which Wade could be the beneficiary of funds, be a charity for the year - please do consider us – thank you.



Keep in touch and here is how to contact us and find out more about what we are up to

01189 787025 | [wadecentre.org.uk](http://wadecentre.org.uk) | [facebook.com/wadedaycentre](https://facebook.com/wadedaycentre)