



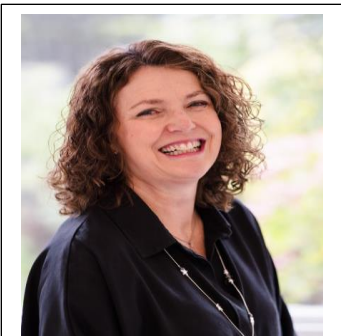
Happy Birthday Newsletter!

Can you believe it has been 6 months since we restarted our Wade newsletter! How time flies when you are having fun! We hope you are still finding our newsletter a useful reference for what is going on and what the menu is looking like? This month we have a new feature called 'What is that?'. We've added a close-up picture of something for sale in the Wade charity shop and you can have a go at guessing what it is.



The daffodils have been spectacular and the new bay tress outside the Centre are looking very nice, alongside the new blinds, new pictures and redecorated lounges! We are looking forward to our Wade Open Day on 19th April where we can show the refurbished Centre to potential new members and people that refer people to Wade. Happy reading all 😊 and check out the NEW animal related activities in this month's calendar.

Trustee News: From Louise Wingfield

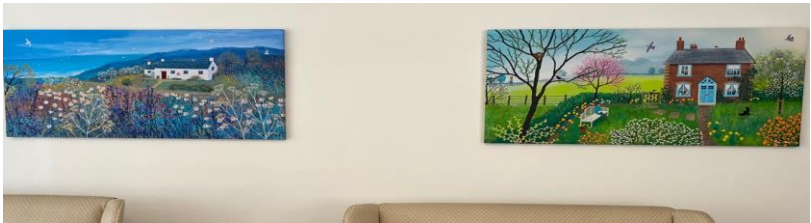


Excited, relieved, thankful – just a few words to express how delighted we are that the lounge renovations are now complete.

Speaking on behalf of all the Trustees, we would like to extend a BIG Thank You to everyone for being so understanding after we were flooded.

At times it was a challenge whilst everyone gathered in the dining room for morning activities, lunch, and afternoon tea. Our lovely hairdresser, Lorenza, cramped in a smaller room than usual. But overall, we have been typically stoic, and our patience has paid off now that we have a beautifully decorated room with new furniture, TV and sound system.

And we all absolutely love the new paintings by the artist Jo Grundy (see below picture). They are so colourful; I think we would all like one in our own homes!



As part of our appreciation to members, their families our staff and fund raisers. We were delighted to hold a 'Thank You ' day on Friday 22 March.

Continued.....

As you will see from the photos below, everyone enjoyed themselves and Philip Mirfin our Chair of Trustees gave a thank you speech. It really was so great seeing so many members and their families coming in to chat and have a cream tea and cake.



Now that we are back on our feet, we would like to start welcoming new members to Wade. If you know of anyone who would like to join us for a trial day, please do let Emma, our Manager, know. We have such a lovely range of activities and services now – singing, seated tai-chi, therapy dog, flower arranging, quizzes, arts & crafts, hairdressing, chiropody, and physiotherapy. If you have any suggestions for activities, please do let us know. And of course, you're always welcome to come along to Wade on additional days.

As always, everyone will receive a warm welcome.

Louise.



These two ladies help keep me and the Centre operating at its best. They always go above and beyond to make a difference to our members.

Emma Hamilton- NEW Wade Centre Manager.

Our Great Wade Team introductions continue.....

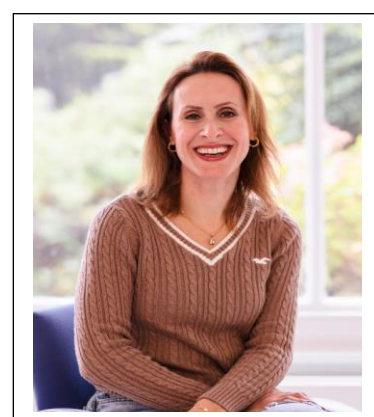
In this month's newsletter Emma introduces us to the office team who make sure all the accounting, member organisation and administration is done!

Introducing Our Office Team

Elaine is our Wade Secretary and Mya is our Wade Accounts Assistant.

Elaine Anderson

Maya Abou Ismail



April's Tasty Lunches

We love Ronnie & Julie's lunches they always serve up a great healthy and nutritious two course lunch and this month is no different.

Please tell your friends about the best lunches in Wokingham as now we have all our lounges open, we can start to look to increase our membership.

April's Member Activity Calendar!

This month's activities feature our usual great activities like Soph and Sing for Your Self and Tai Chi but excitingly this month we have a few NEW animal activities to bring to Wade!!!

We have Bromwell Farm visiting (think a pony is coming?) and we have the Berkshire Birds of Prey coming in on the day Ronnie will be making sausage casserole!

ACTIVITIES FOR APRIL 2024		
3 rd April	Tai Chi	AM
4 th April	Hairdresser	Appointment Needed
5 th April	Friday singsong	PM
8 th April	Tai Chi	PM
10 th April	Tai Chi	AM
11 th April	Hairdresser	Appointment Needed
11 th April	Bingo with Staff	PM
12 th April	Friday Singsong	PM
15 th April	Bromwell Farm	11-12
15 th April	Tai Chi	PM
17 th April	Sing for Yourself	13:30
18 th April	Hairdresser	Appointment Needed
18 th April	Afternoon Quiz	PM
19 th April	Nik singer	PM
22 nd April	Berkshire Birds of Prey	AM
22 nd April	Tai Chi	PM
24 th April	Tai Chi	AM
25 April	Morning Board Game Challenge	AM
25 th April	Hairdresser	Appointment Needed
29 th April	Tai Chi	PM

To book Hairdressing appointments please call 01189787025

We do have appointments with the Chiroprapist please call for 01189787025 availability.

Week 1 (1 April—5th April)

Monday
Bank Holiday
Tuesday
Roast Chicken
Wednesday
Sausage Casserole
Thursday
Fish Cakes
Friday
Corned Beef Hash

Week 2 (8th April—12th April)

Monday
Fish & Chips
Tuesday
Cottage Pie
Wednesday
Beef pie
Thursday
Hunters Chicken
Friday
Roast Pork

Week 3 (15th April—19th April)

Monday
Savoury Mince
Tuesday
Chicken Casserole
Wednesday
Chicken in Bacon
Thursday
Sausages
Friday
Scampi

Week 4 (22nd April—26th April)

Monday
Sausage Casserole
Tuesday
Liver & Bacon
Wednesday
Fishcakes
Thursday
Roast Gammon
Friday
Cottage Pie



A 98th birthday surprise for Jean and Au revoir to our friend Mick

We had two big member events happen on one day a few weeks back. We said farewell to Mick Plummer, who is going to live in a care home in Woodley with his wife Maureen. We will miss you and hope you had a fun final day with us at Wade.

We then had Jean Snarey's 98th birthday surprise. Jean's son and family came all the way from Jersey to surprise her. She was clearly delighted to see them all.



Upcoming Events for Your Diary

Friday 19th April – New Member's Open Day (12-3pm)

- Time to show off the redecorated lounges to new members and those who refer to Wade. **INVITE ONLY**

Thursday 25th April – Wade Fashion Show

- An exciting evening of fashion and fun which is now sold out!

Monday 6th May – Wade at the Wokingham May Fair

Friday June 7th – Annual Wade & Home Start Golf Day

- Event at Hennerton Golf Club in Wargrave
- Lots of hole in one prizes and a special prize for the 11th hole of £10,000!
- Celebrity auction with lots of golf prizes

Saturday 22nd June – Wade Summer Fair

- We are collecting raffle prizes, unwanted presents and tombola prizes if you have anything please pass to Elaine.

Saturday 23rd November – Wade Christmas Fair



Thank you Wokingham Lions
- Wade have been awarded one of the 50 £500 Lion awards to celebrate their 50th anniversary. We are going to use the money to make things to sell at the Lions May Fair.

Can you guess what this is from the Wade shop? Tell Elaine or Emma if you know!!!



Charity Golf Day
Friday 7 June
8am Arrival, 9am Tee Off
Hennerton Golf Club, Wargrave, RG10 8LT

● £10,000 Hole in One Prize! ●

PLUS

- 7 other hole in one prizes
- 3 team prizes
- 4 nearest to the pin prizes

£75 entry - Includes 18 Holes
All collection money raised will be donated to Wade and Home Start Wokingham
Call 0118 978 7025 to book!

Also Included:

- 2 Course Carvery Lunch
- Beat The Pro
- Great Raffle Prizes
- Breakfast Rolls
- Celebrity Auction

wade

HOME START
Wokingham District

THANK YOU to our Friends And Supporters of Wade

Julia led a great Friends of Wade Skittles night for us last month raising over £300 and having created a lot of competitive fun at the centre! We also got some great press coverage as you can see below.

We are looking forward to seeing what the next event – the SOLD-OUT Wade fashion show – achieves. We have Sue leading that event and I have heard she has selected some pretty good models for the event!!!!

Skittles evening strikes the right note for WADE fundraiser



People were bowled over at the WADE Day Centre skittles evening recently.

The event, at their Reading Road centre, cost visitors £7 and included a raffle, while guests were encouraged to bring...

evening possible.

Keep in touch and here is how to contact us and find out more about what we are up to

01189 787025 | wadecentre.org.uk | facebook.com/wadedaycentre